



Catalog 2023

Ver. 11.22

GENERAL INDEX

	Electronic board 230V for sliding gate Electronic board 380V for sliding gate Electronic board 230V for swing gate Universal electronic board Electronic board 230V for tubular & rolling shutters Electronic board 230V for lights control	Page 3 Page 3 Page 3 Page 4 Page 4 Page 4
	Remote controls	Page 5
	Radio receivers	Page 6
	Accessories & safety devices	Page 7
	Operators for sliding gate ARGO & ARES	Page 8, 9
	Operators for swing gate LB5	Page 10
	Operators for swing gate LB7	Page 11
	Underground operators for swing gate STONE	Page 12
	Road barrier BL306	Page 13
	Guide to choosing electronic boards Compatibility Guide for Remotes/Receivers Secret-Key system Far-Storing utility Terms of sale	Page 14 Page 15 Page 16 Page 17 Page 18

Electronic board 230Vac

SLIDING GATE



Box SCT6 included

CTR18 – 230 Vac - sliding gate

Power supply transformer 32VA
Closing function just after crossing the photocell
Digital adjustment of working times by trimmer
Plug-in radio receiver card (optional)
Plug-in power regulator card (included)

Suitable card for use in very cold climates



Only the card - receiver included

CTR310SC – 230 Vac – sliding gate

Slow-down function
Digital adjustment of working times
Pedestrian opening
Automatic programming procedure
Closing function just after crossing the photocell
Far-storing function and Secret Key ready
Power regulation by trimmer

SCT4 – Box for control board (optional)

Electronic board 380Vac

SLIDING GATE



Box and Receiver included

AT380/D – 380 Vac - Sliding gate

Management of a 380 Vac three-phase motor
Digital adjustment of working times
Management of flashing light and courtesy light
Far-storing function and Secret Key ready
Motor overcurrent protection

Electronic board 230Vac

SWING GATE



Box SCT6 included

CTR17 – 230 Vac - swing gate

Power supply transformer 32VA
Management of electric deadbolt or courtesy light
Digital adjustment of working times by trimmer
Electric lock management
Plug-in radio receiver card (optional)
Plug-in power regulator card (included)

Suitable card for use in very cold climates



Box SCT6 and receiver included

CTR320 – 230 Vac - swing gate

Slow-down function
Digital adjustment of working times
Pedestrian opening
Gate open warning light
Courtesy light management
Far-storing function and Secret Key ready
Power regulation by trimmer

Electronic board

UNIVERSAL

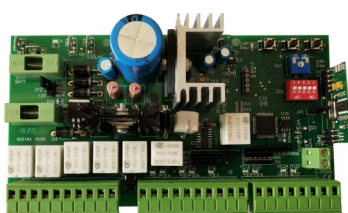


Box SCT6 included

CTR19 – 230 Vac – Universal (*Swing gate, Sliding gate,*)

Power supply transformer 32VA
Management of 2 leaves with 4 limit switches
Digital adjustment of working times by trimmer
Plug-in radio receiver card (optional)
Plug-in power regulator card (included)

Suitable card for use in very cold climates



Box SCT6 and Receiver included
Transformer 100VA included

CTR500 – 24 Vdc – Universal (*Swing gate, Sliding gate,*)

Slow-down function
Digital adjustment of working times
Pedestrian opening
Obstacle detection
Management of 2 leaves with 4 limit switches
Far-storing function and Secret Key ready
Closing function just after crossing the photocell
Electric lock management



Box SCT8 and Receiver included
Transformer 250VA included

CTR500/STR – 24 Vdc – Universal (*Swing gate, Sliding gate,*)

Slow-down function
Digital adjustment of working times
Pedestrian opening
Obstacle detection
Management of 2 leaves with 4 limit switches
Far-storing function and Secret Key ready
Closing function just after crossing the photocell
Electric lock management

Electronic board 230Vac

TUBULAR / ROLLING SHUTTER / LIGHTS CONTROL



Box and Receiver included

CTR29 – 230 Vac – Tubular motor

Digital adjustment of working times
Separate Open / Close controls
“Dead man” logic selectable
Far-storing function



Box and Receiver included

CTR30 – 230 Vac – Rolling shutter motor

Digital adjustment of working times
Limit switches inputs
Management of flashing light and courtesy light
Photocell input
Plug-in torque adjustment card (optional)
Far-storing function and Secret Key ready



Box and Receiver included

CTR29L – 230 Vac – Lights control


2 Lighting control channels
Timed or bistable operation
1 KW power for each channel
Far-storing function

Remote controls 433 MHz


For transmitters / receivers compatibility list, see page 15

<p>Secret Key Ready</p>  <p>Fixed code duplicator</p>	<p>SMARTY433 - Rolling code / fixed code / duplicator - 433 MHz</p> <p>Rolling code - 4.2 million serialized codes Fixed code - 12 bit standard codes Duplicator - Can copy up to 80 bit (fixed code only) <u>Each button can be independently fixed code or rolling code</u> Can be programmed manually or by means the programmer PS01 4 independent channels Powered by a long life CR2032 lithium battery</p>
	<p>GLADY – Universal multi-frequency remote control</p> <p>Duplicator of fixed code and rolling-code remotes (see list) Operating frequency 270 - 900 MHz 4 completely independent channels Powered by a long life CR2032 lithium battery</p>
 <p>Secret Key Ready</p>	<p>RTA2 – Wireless keyboard 433,92 MHz</p> <p>Operation with fixed code or rolling code (selectable) Secret Key ready function Night light and acoustic beep IP64 protection degree Powered by a long life CR2032 lithium battery</p>
	<p>PBS2 – Wireless rolling code pushbutton panel 433,92 MHz (touchscreen)</p> <p>4.2 billion serialized codes Operating frequency 433.92 MHz 2 transmission channels Powered by a long life CR2032 lithium battery</p>
	<p>TRP1 – Rolling Code transponder 433,92 MHz</p> <p>12Vdc / 24Vac power supply 4 Channels Equipped with 5 TRC1 keys IP54 protection degree</p> <p>TRC1 – Transponder key</p>

Remote controls 868 MHz

<p>Secret Key Ready</p> 	<p>SMARTY868 - Rolling code / fixed code - 868 MHz</p> <p>Rolling code - 4.2 million serialized codes Fixed code - 12 bit standard codes <u>Each button can be independently fixed code or rolling code</u> Can be programmed manually or by means the programmer PS01 4 independent channels Powered by a long life CR2032 lithium battery</p>
--	---

SECRET KEY / PROGRAMMER

	<p>PS01 – Programmer for SMARTY / RSK4N (Secret Key System)</p> <p>Manages and programs a specific RSK4N receiver Programs the SMARTY remotes Bluetooth connection to RSK4N receiver LebManager software for PC included</p>
---	--

Radio receivers

FIXED CODE / ROLLING CODE



Secret Key Ready

Plug-in universal receiver

2 Channels (100 total storable codes)
2 Operation modes (monostable and bistable)
Far-storing function and Secret Key ready
Compatible with all Leb remote controls

RWAU2 - 433,92 MHz

RPAU2 - 868,35 MHz



Secret Key Ready

Universal receiver with terminal board

2 Channels (100 total storable codes)
2 Operation modes (monostable and bistable)
Far-storing function and Secret Key ready
Compatible with all Leb remote controls

RKAU2 - 433,92 MHz

RPAU2K - 868,35 MHz



Secret Key Ready

Universal outdoor receiver with box and antenna

2 Channels (100 total storable codes)
2 Operation modes (monostable and bistable)
Far-storing function and Secret Key ready
Compatible with all Leb remote controls

RWAU2SA - 433,92 MHz

RPAU2SA - 868,35 MHz



Secret Key Ready

Rolling Code outdoor receiver with box and antenna

4 Channels (1000 total storable codes)
Secret Key ready function
Wiegand interface for access control
Compatible with *SMARTY, ROLLY, TRP1, RTA2, PBS2*

RSK4N- 433,92 MHz

RPSK4N - 868,35 MHz

MEM256 – Back-up memory module (included)

BT01 – Bluetooth module for connection to PS01 (optional)



Secret Key Ready

Universal outdoor receiver with box and antenna

4 Channels (1000 total storable codes)
2 Operation modes (monostable and bistable)
Far-storing function and Secret Key ready
Compatible with all Leb remote controls

RKAU4- 433,92 MHz

RPAU4 - 868,35 MHz

Accessories

	<p>FTE – Outdoor photocell</p> <p>Range 15 m IP54 protection degree Equipped with focalizing lens Low current consumption Synchronizable if powered with 24Vac</p>
	<p>FL1 – Vehicle detector <i>(Photolaser)</i></p> <p>Maximum range 8 m Equipped with focalizing lenses Adjustable detecting distance 12Vdc / 24Vac power supply</p>
	<p>ANSE – Tuned antenna 433,92/868,35 MHz</p> <p>Calibrated antenna Supplied with 4 m of RG58 coaxial cable</p>
	<p>LP – Flashing light with Led bulb</p> <p>LP24LED - 24 V LP12LED - 12 V LP230LED - 230 Vac</p>
	<p>LMB1 – Flashing light with Led bulb and built-in antenna</p> <p>LMB1/24LED - 24 v LMB1/12LED - 12 v LMB1/230LED - 230 Vac</p>
	<p>CLE – Aluminium column for photocell</p> <p>CLE5 Height 50 cm CLE10 Height 100 cm *** Unit price (sold in packs of 2 units)</p>
	<p>LMP20WB – Solar panel kit 12-24 Vdc (selectable voltage)</p> <p>Battery charge current control (battery protection) 20W power Equipped with fixing brackets Output with stabilized voltage (direct connection to battery)</p>
	<p>SELE2 – Outdoor key switch</p> <p>Aluminium frame Equipped with 2 keys (European standard) Double switch (5A capacity load)</p>
	<p>BSK1 – Electric Lock with built-in receiver 433,92 MHz</p> <p>Built-in receiver Equipped with 2 remote controls Far Storing function</p>
	<p>REG – Power regulator card</p> <p>Motor torque regulation card for CTR17, CTR18, CTR19, CTR30</p>

ARGO operator

SLIDING GATE



ARGO230 - Irreversible operator for sliding gate

- Foundation plate supplied
- Electronic limit switches
- Equipped with stainless steel screws
- Capacity 1000 Kg



MTA3 – KIT for sliding gate up to 1000 kg weight

- Operator **ARGO230**
- Electronic board **CTR310SC**
- 2 Remote controls **SMARTY**



KAS3 – KIT for sliding gate up to 1000 kg weight

- Operator **ARGO230**
- Electronic board **CTR310SC**
- 2 Remote controls **SMARTY**
- Photocell **FTE**
- Antenna **ANSE**
- Flashing light **LP230LED**

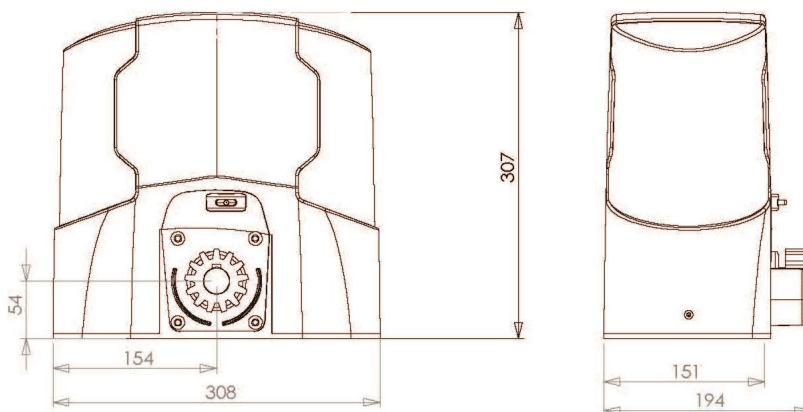
Foundation plate for operators ARGO - ARES (included)

- Thickness mm 4
- Made of galvanized steel

1 m Rack (optional)

- Nylon rack module 4
- Steel core 10x10 mm
- 6 connections per meter
- For sliding gate up to 1000 Kg weight
- Equipped with screws and accessories

TECHNICAL FEATURES	ARGO230
Max. sliding door weight	1000 Kg
Electric motor power supply	230Vac - 50Hz
Absorbed current	1,2 A
Electric motor capacitor	12 uF
Thermal protection	120 °C
Electric motor speed	1400 rpm.
Sliding door speed	10 m/min.
Max. operator torque	55 Nm
Rack module	4
Operating temperature	-20 / +60 °C
Protection degree	IP44
Duty cycle	30 %
Type of limit switches	Electronic
Operator weight	9,5 Kg



ARES operators

SLIDING GATE



ARES500 / ARES1000 - Irreversible operator for sliding gate

- **Brushless** motor
- Built-in Encoder
- Suitable for intensive use
- Equipped with foundation plate
- Electronic limit switches
- Equipped with stainless steel screws



MTA4 – KIT for sliding gate up to 1000 kg weight

- Operator **ARES1000**
- Electronic board **CTR640SC**
- Toroidal transformer **TRF6**
- 2 Remote controls **SMARTY**

MTA5 – KIT for sliding gate up to 500 kg weight

- Operator **ARES500**
- Electronic board **CTR640SC**
- Toroidal transformer **TRF6**
- 2 Remote controls **SMARTY**



KAS4 – KIT for sliding gate up to 1000 kg weight

- Operator **ARES1000**
- Electronic board **CTR640SC**
- Toroidal transformer **TRF6**
- 2 Remote controls **SMARTY**
- Photocell **FTE**
- Antenna **ANSE**
- Flashing light **LP12LED**

KAS5 – KIT for sliding gate up to 500 kg weight

- Operator **ARES500**
- Electronic board **CTR640SC**
- Toroidal transformer **TRF6**
- 2 Remote controls **SMARTY**
- Photocell **FTE**
- Antenna **ANSE**
- Flashing light **LP12LED**

TECHNICAL FEATURES		ARES1000	ARES500
Max. sliding door weight	Kg	1000	500
Absorbed current	A	4	3
Max. operator torque	Nm	55	36
Rack module	M	4	4
Operating temperature	°C	-20 / +60	-20 / +60
Protection degree	IP	44	44
Duty cycle	%	100	100
Type of limit switches	/	Electronic	Electronic
Operator weight	Kg	9	9



CTR640SC - Electronic board for ARES

Only the card - Receiver included

- Slowing down function
- Digital adjustment of working times by Encoder
- Pedestrian opening
- Automatic programming procedure
- Closing function just after crossing the photocell
- Far Storing function
- Obstacle detection

LB5 operator

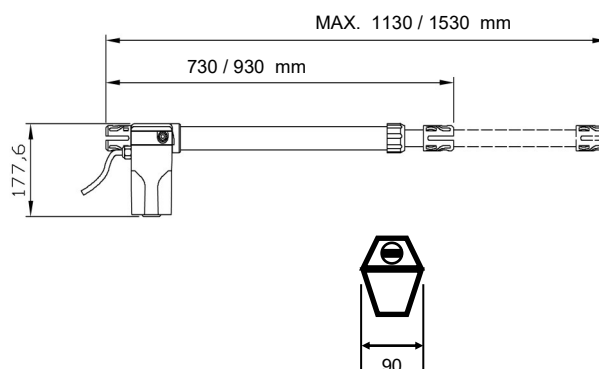
SWING GATE



LB5 - Irreversible operator for swing gate

Gearing made of hardened steel and bronze
Stainless steel rod and powder coated aluminum frame
Unlocking system with safety key
Equipped with No-welding front and rear brackets

TECHNICAL DATA	LB5-1-230	LB5-2-230
Operator power supply	230Vac - 50Hz	
Absorbed power	320VA	
Rod speed	1,6 cm/sec.	
Electric motor speed	1400 rpm	
Thrust	2200N	
Max. rod stroke	400mm	600mm
Protection degree	IP44	IP44
Operating temperature	da -20 a +60°C	
Duty cycle	30%	
Operator weight	6,0 Kg	6,5 Kg



KLB5 - Kit for swing gate

2 Operators **LB5**
Electronic board **CTR320**
2 Remote controls **SMARTY**
Photocell **FTE**
Antenna **ANSE**
Flashing light **LP230LED**

KLB5-1 – Kit for leaves up to 2,5 m length

KLB5-2 – Kit for leaves up to 4 m length

LB7 operator

SWING GATE



LB7 - Irreversible operator for swing gate

Die-cast aluminium frame, powder-coated
Gearing made of hardened steel and bronze
Unlocking system by protected key
Built-in capacitor
2 pre-assembled mechanical stroke-ends
Equipped with front and rear brackets

Technical data	LB7-24	LB7-230
Electric motor power supply	24Vdc	230Vac - 50Hz
Nominal absorbed current	5A	1,2A
Stroke of traction pivot	300mm	300mm
Speed of traction pivot	18mm/sec.	16mm/sec.
Thrust	2500N	2000N
Protection degree	IP44	IP44
Motor capacitor (internal)	/	10uF
Operating temperature	from -20 to +50°C	from -20 to +50°C
Working cycle	50%	70%
Dimensions	1095*115*110mm	1095*115*110mm
Weight	12Kg	12,5Kg



KLB7 - 230 Kit for swing gate

2 Operators **LB7-230**
Electronic board **CTR320**
2 Remote controls **SMARTY**
Photocell **FTE**
Antenna **ANSE**
Flashing light **LP230LED**

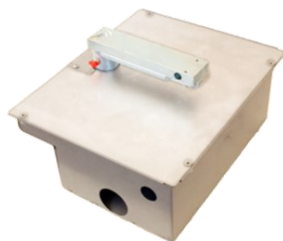


KLB7 - 24 Kit for swing gate

2 Operators **LB7-24**
Electronic board **CTR500/STR**
2 Remote controls **SMARTY**
Photocell **FTE**
Antenna **ANSE**
Flashing light **LP24LED**

STONE operator

SWING GATE



STONE - Irreversible underground operator

Foundation box made of **STAINLESS STEEL**
 Drive-over lid
 Gearing made of steel and bronze
 Unlocking system with broached lever
 Foundation box with drainage holes



STONE230 – Gearmotor 230Vac



CAINT/110IN – Foundation box for 110° opening

Transmission system for 110° opening
 Transmission by means levers



CAINT/180IN – Foundation box for 180° opening

Transmission system for 180° opening
 Transmission by means chain



KUO - Kit for swing gate

2 Gearmotors **STONE230**
 2 foundation boxes **CAINT**
 Electronic board **CTR320**
 2 Remote controls **SMARTY**
 Photocell **FTE**
 Antenna **ANSE**
 Flashing light **LP230LED**

KU05IN – Kit for 110° opening

KU06IN – Kit per 180° opening

TECHNICAL FEATURES	STONE230
Max. leaf length	2 m
Electric motor power supply	230 Vac
Absorbed current	1,2 A
Max. operator torque	300 Nm
Operating temperature	-20 / +60 °C
Protection degree	IP67
Duty cycle	30%
Operator weight	15 Kg

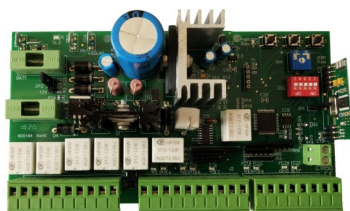
BL306

ROAD BARRIER



Electromechanical road barrier 24 Vdc

Equipped with telescopic bar (2 - 4 m)
Opening time 3 sec.
Powder coated galvanized steel frame
Equipped with electronic board
Equipped with electric limit switches
Gearing made of steel
Simple unlocking system

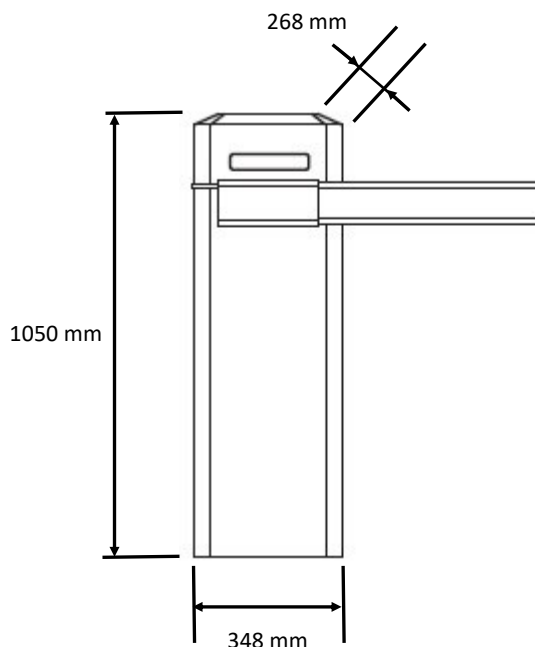


Only the board


CTR500SB/SC - 24Vdc - Road barrier

- Soft-stop function
- Separate Open/Close controls
- Far Storing function
- Electromagnet management
- Automatic programming procedure
- Obstacle detection

TECHNICAL FEATURES		BL306
Boom length	m	2.5 - 4
Boom opening time	Sec.	3
Duty cycle	%	70
Main power supply	Vac	230V - 50Hz
Electric motor power supply	Vdc	24V
Electric motor power	W	80
Max. torque	Nm	280
Operating temperature	°C	-20 / +50
Protection degree	IP	44
Dimensions	mm	348*268*1050
Operator weight	kg	60



Comparative table of control panel functions

Available functions / Card models	CTR18	CTR310	CTR17	CTR320	CTR19	CTR640	CTR500	CTR29	CTR30	AT380/D
										
Motor/s power supply	230 Vac	230 Vac	230 Vac	230 Vac	230 Vac	24 Vdc	12/24 V	230 Vac	230 Vac	380 Vac
Control of 1 or 2 motors	1	1	2	2	2	1	2	1	1	1
Built-in receiver										
Possibility to close the receiver only to rolling code										
"Far storing" function										
Automatic programming										
Possibility to operate with single leaf										
Possibility to erase the delay between the leaves										
Limit-switches control										
Obstacle detector										
Slow-down function										
Pedestrian start command										
Separated inputs for Open and Close commands										
Stop input (emergency)										
"Step-by-Step" operation mode										
"Deadman" operation mode										
"Condominium" operation mode										
Automatic closing function										
Closure after crossing the photocell										
Torque regulator										
Fotostop function										
Safety rib input (also analog)										
Electric lock control										
Kickback function for electric lock										
Blinker control										
Courtesy light										
Open-gate lamp										
Built-in battery charger										

Comparative table Remote controls / Receivers

				 100 storable codes	 100 storable codes	 1000 storable codes	 1000 storable codes
ARTICLE	FEATURES	433,92 MHz	VERSION	ON BOARD RECEIVERS	RKAU2, RWAU2, RWAU2SA	RK4U4	RSK4N
SMARTY	it's also a fixed code remotes duplicator		Rolling Code (default)	OK	OK	OK	OK
			Fixed Code (to be selected)	OK	OK	OK	NO
GLADY	it's a fixed code and rolling-code remotes duplicator (see list)		Rolling Code	OK	OK	OK	OK
			Fixed Code	OK	OK	OK	OK
RTA2	Wireless		Rolling Code (default)	OK	OK	OK	OK
			Fixed Code (To be selected)	OK	OK	OK	NO
TRP1	To be powered		Rolling Code	OK	OK	OK	OK
PBS2	Touchscreen		Rolling Code	OK	OK	OK	OK

SECRET KEY System



SMARTY, not only it is a fixed code copier, but it can be used in the **Secret Key System**.



RSK4N
Classic receiver for rolling code, it can operate also in the **Secret Key System**.



PS01 + Software Leb Manager
Inductive programmer for **SMARTY** remotes, to be used together with Windows based SW LebManager.

What is Secret Key System of Leb electronics?

It is a Transmitter / Receiver system that allows to delete, insert, change any remote control stored into a specific receiver RSK4N (433,92 MHz), **but only if authorized**. ANY OPERATION CAN BE CARRIED OUT FAR FROM INSTALLATION. It is based on rolling code transmission. Moreover, with a PC and the dedicated SW LebManager, it can store and manage codes and names directly to the receiver through Bluetooth protocol. Database can be stored on a backup memory card or on PC.

How does Secret Key System work?

Any radio transmitter SMARTY contains an electronic circuit programmable by PS01, able to turn its transmission into "**Secret Key**" standard. Beside normal use, the remote can transmit instructions to the specific receiver in order to modify previously stored codes or enter a new one.

How many parts Secret Key System consist of?

It is a user-friendly and very easy system. It consists of:

Receiver RSK4N (433,92 MHz)

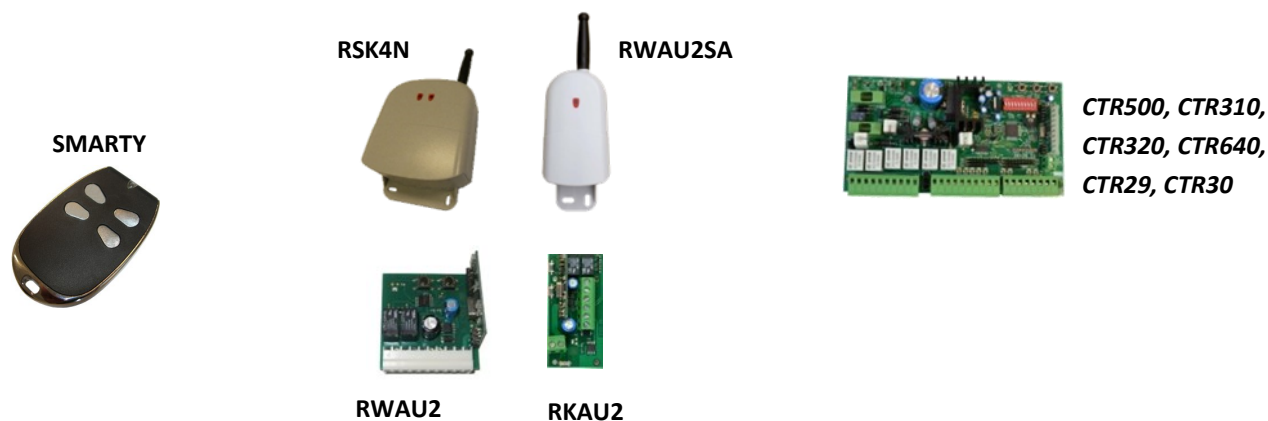
Remote control SMARTY433 (433,92 MHz)

Programmer PS01 + Windows based SW LebManager

What are the advantages of using Secret Key System?

The system is very useful when in need of controlling a large number of remotes, codes and receivers on same installation. The installer can count on a database of codes and only himself has privileges for **storing and modifying codes in the receiver**. New radio transmitters can be stored, removed or changed without being on Installation site. Receivers, once installed, do not need to be manually operated, being possible to communicate through Bluetooth.

FAR STORING System



What is “Far Storing” feature?

It is a special feature that makes possible to store new Leb rolling code remotes without manually operating on the receiver.

Why is it so important?

Because if the receiver of your installation is working only in rolling code mode, rolling remotes cannot be cloned. In case you need to add new remotes, you must manually operate on the receiver. With Far Storing feature, instead, you can add new remotes just by operating on push buttons of a new remote to be stored, together with a remote already stored.

What do I need in order to get Far Storing feature work?

When your installation is working with any of CTR500, CTR310, CTR320, CTR29, CTR30, CTR640 control boards, or RWAU2SA, RKAU2 RWAU2 receivers and SMARTY remotes (in rolling code mode), you can use Far Storing function.

Is the procedure difficult to do?

No, it is very simple, only a couple of pushes. Just make sure to be within working range of receiver while storing new remotes into installation.

GENERAL SALES CONDITIONS

ARTICLE 1 WARRANTY

1.1. With exception of what expressly agreed each time between the parts, Leb electronics guarantees the conformity of the supplied products and anything else explicitly agreed. **Warranty due to product defects is limited only to materials or manufacturing defects** that can be referred to Leb electronics.

The warranty does not apply in case of:

- **Malfunctions or damages related to transport;**
- **Malfunctions or damages caused by anomalies of the electric mains or any incorrect use of the product;**
- **Tampering or damages caused by unauthorized personnel and/or due to use of non-original Leb electronics articles and/or spare parts;**
- **Defects and/or damages caused by chemical agents and/or atmospheric phenomena;**
- **Malfunctions due to lack of maintenance;**
- **Replacement of parts that are subjected to usage wearing, as lamps, batteries, etc.;**
- **Products without the Barcode label;**
- **Use of non-original Leb electronics accessory.**

1.2. Warranty has a validity of 24 months beginning from the start-up date, when a suitable evidence of that is available, or from the production date reported on the Barcode label.

The warranty is subjected to an expressly written request to Leb electronics. No return of goods or debit notes will be accepted if not previously authorized by Leb electronics. After authorization, once the goods have been returned, Leb electronics, at its own will, can operate in the following ways:

- Supply the buyer with free of charge and ex-works products of the same quality and type of the faulty or non-standard ones. Leb electronics can also ask the buyer to send back the faulty goods at its own expenses; these goods will become Leb electronics' property;
- Repair at its own expenses the faulty products, or modify non-standard products in the factory of manufacturer. In this case, all transport costs will be at the buyer's expenses;

1.3. The warranty, as per this article, replaces all legal warranties due to defects and differences and excludes any other Leb electronics liabilities that could be originated by the supplied products;

The Buyer will not be able to claim any other further requests.

Leb electronics shall not be responsible for any further claims once the warranty period has expired.

ARTICLE 2 CLAIMS

2.1. Claims regarding quantity, weight, gross weight and colour, or claims regarding faults and defects in quality compliance which the Buyer could discover on delivery of the goods, shall be submitted by the Buyer within 7 days from the delivery, under penalty of nullity of the warranty.

ARTICLE 3 DELIVERY

3.1. Any liability from damages ensuing from total or partial delayed or failed delivery shall be excluded.

ARTICLE 4 PAYMENT

4.1. Any delayed or irregular payment shall entitle Leb electronics to cancel any ongoing agreement, including arrangements not related to the current issue, as well as entitling Leb electronics to claim damages, if any.

4.2. Leb electronics shall however have the right to claim overdue interests at bank rate in Italy increased by 5 points. In case of failed payment Leb electronics shall have the right to cancel all warranties on goods, regarding the Customer as insolvent.

4.3. The Buyer shall be bound to full payment, even when claims or disputes are under way.

All data have been prepared and checked. Leb electronics assumes no responsibility for any errors or omissions.

Leb electronics can at its discretion change at any time the characteristics and prices of products on sale.

The prices shown are excluding VAT.

The minimum amount that can be ordered is € 500.00. Below this amount Leb electronics reserves the right not to accept the order.



LEB ELECTRONICS S.R.L

Via Caduti del Lavoro, 1 - Zona Industriale
25010 - Acquafredda (BS)
ITALY

Phone +39 030 99 67 036
Fax +39 030 99 67 559
www.leb-electronics.com
info@leb-electronics.com

